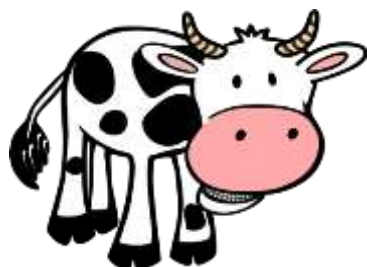


Sound Bingo Set 7: Card 1

(qu, ou, oi, ue, er, ar)



SPELD-SA Sound Bingo Set 7

Picture Key: (ar) carpark, (er) bird, (ou) bow, (qu) squeeze, (ue) queue, (oi) boil, (ou) cow, (ar) bark, (qu) squirrel, (ue) statue, (oi) oil, (er) shirt.

Sound Bingo Set 7: Card 2

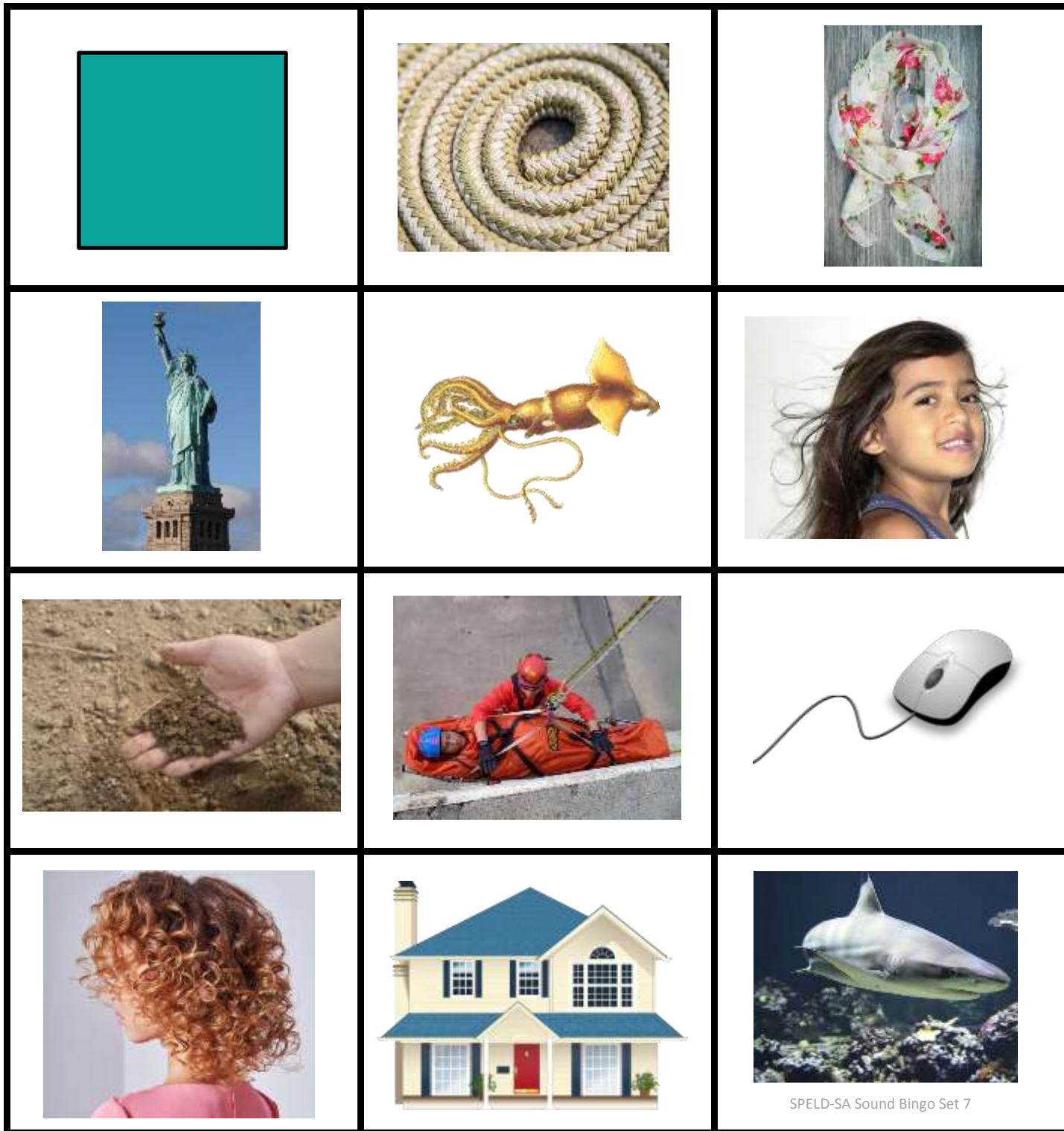
(qu, ou, oi, ue, er, ar)



Picture Key: (oi) coin, (ue) cube, (qu) question, (er) mermaid, (ou) cloud, (ar) car, (ue) tube, (er) skirt, (ou) loud, (qu) queen, (ar) star, (oi) point.

Sound Bingo Set 7: Card 3

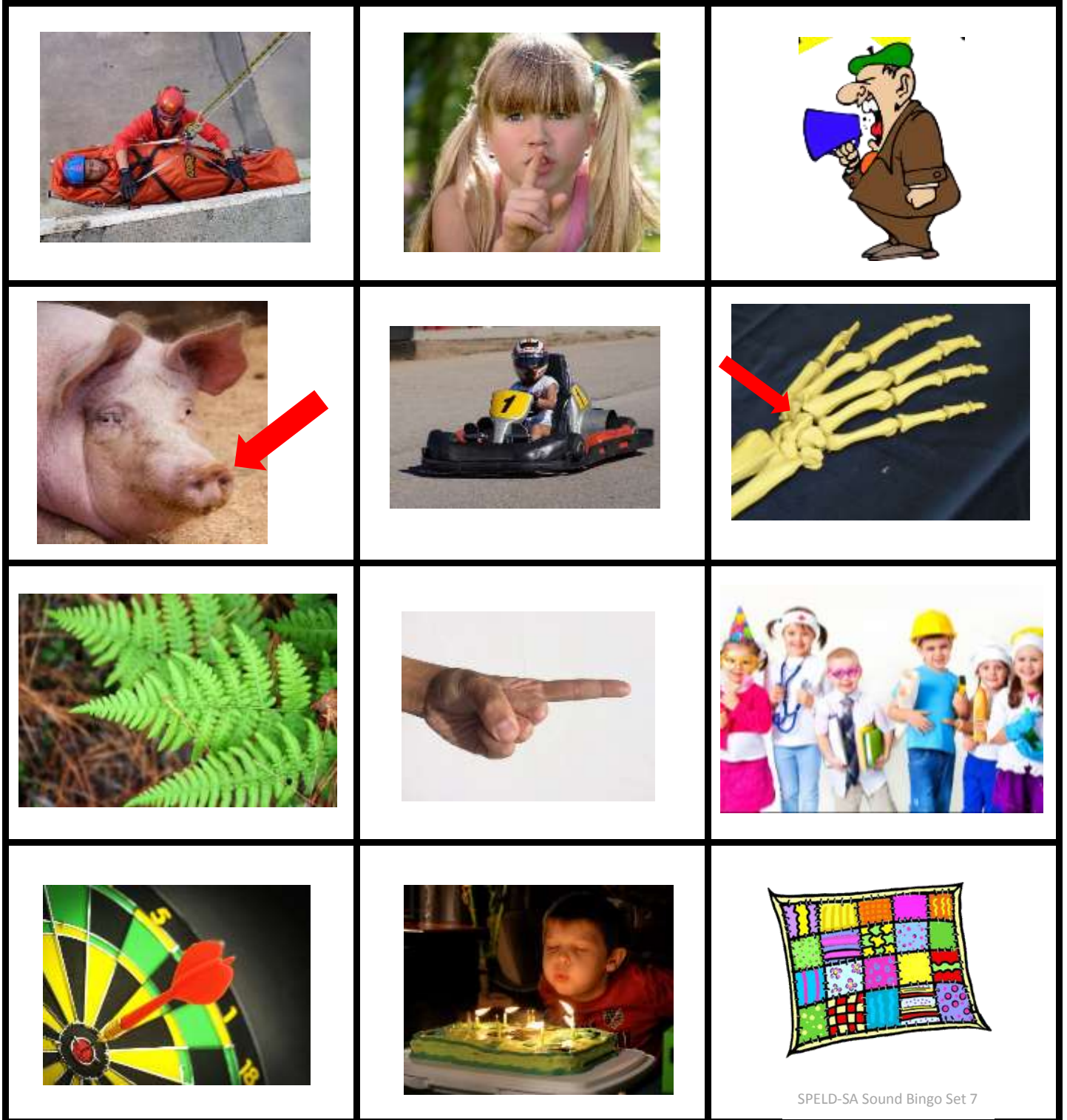
(qu, ou, oi, ue, er, ar)



Picture Key: (qu) square, (oi) coil, (ar) scarf, (ue) statue, (qu) squid, (er) girl, (oi) soil, (ue) rescue, (ou) mouse, (er) curls, (ou) house, (ar) shark.

Sound Bingo Set 7: Card 4

(qu, ou, oi, ue, er, ar)



SPELD-SA Sound Bingo Set 7

Picture Key: (ue) rescue, (qu) quiet, (ou) shout, (ou) snout, (ar) go-kart, (oi) joint, (er) fern, (oi) point, (ue) costume, (ar) dart, (er) birthday, (qu) quilt.